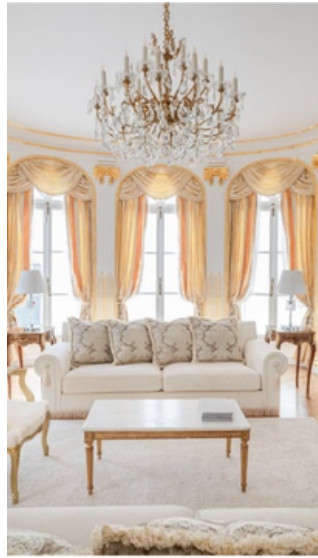




THE IMPRESSARIO OF INSPIRING EVENT VENUES



Our passion for architecture inspires us to select emblematic buildings, from Paris to Cannes.

We offer our clients the unique opportunity to transform these prestigious locations into unforgettable event spaces.

We highlight the unique magic of our collection of event addresses.

By celebrating the rich history of these legendary places, we create events that capture their power and timeless charm.

We believe that the future of events rests on you and the endless possibilities of Story Living.

But what is "Story Living"?:

It's when your guests become "Spect-Actors," when immersive digital technologies come to life, and when the event of your dreams comes true. It is innovation that creates authentic connections between participants.



Les
services
Keys



A COLLECTION OF EXCEPTIONAL EVENT BRANDS



Hôtel
Mona Bismarck



HOTEL MONA BISMARCK



DISCOVER



 *BORDER OF THE SEINE, PARIS*
16TH

This 1400m² mansion, facing the Eiffel Tower, is an emblematic address formerly inhabited by Countess Mona Bismarck.

On the ground floor, a 450m² row of four period lounges welcomes you, while on the first floor extends a gallery of four rooms covering 450m².

It also offers a private garden of 500 m² and a spacious terrace. Entirely dedicated to the art of hosting, this refined venue is ideal for events such as corporate seminars, conferences and cocktails or fashion shows.



Cocktail party for up to 400 people



Lunch / Dinner for up to 190 people



Meeting of up to 100 people



2 Showrooms de 450 m²



Hotel service on request

HÔTEL DE MONTGASCON



DISCOVER



SAINT-GERMAIN-DES-PRES, PARIS 7TH

A captivating haven of peace in the heart of Paris.

Former home of Françoise Sagan, this unique place embodies timeless charm and an exceptional atmosphere.

This mansion combines elegance and majestic architecture, with refined ornaments and a private garden.

It includes a large modular living room, a small living room with Gournay wallpapers, a dining room with adjoining kitchen, as well as a private garden, a terrace and a glass roof.



Cocktail party for up to 80 people



Lunch / Dinner for up to 40 people



Meeting of up to 25 people



1 comfortable bedroom



Hotel service on request

KEYS HOTEL



DISCOVER



 **DAUPHINE, PARIS 16E**

A sumptuous private mansion from the time of Napoleon III, where luxury and elegance mingle. Located near the Arc de Triomphe and Porte Maillot, it offers a unique blend of Belle Époque charm and modernity, perfect for exceptional events.

Distributed over 4 levels. It includes a large living room, a generous dining room, two additional lounges, as well as a winter garden. You will also find a cooking workshop and a 40 m² outdoor terrace.



Cocktail party for up to 80 people



Lunch / Dinner for up to 30 people



Meeting of up to 25 people



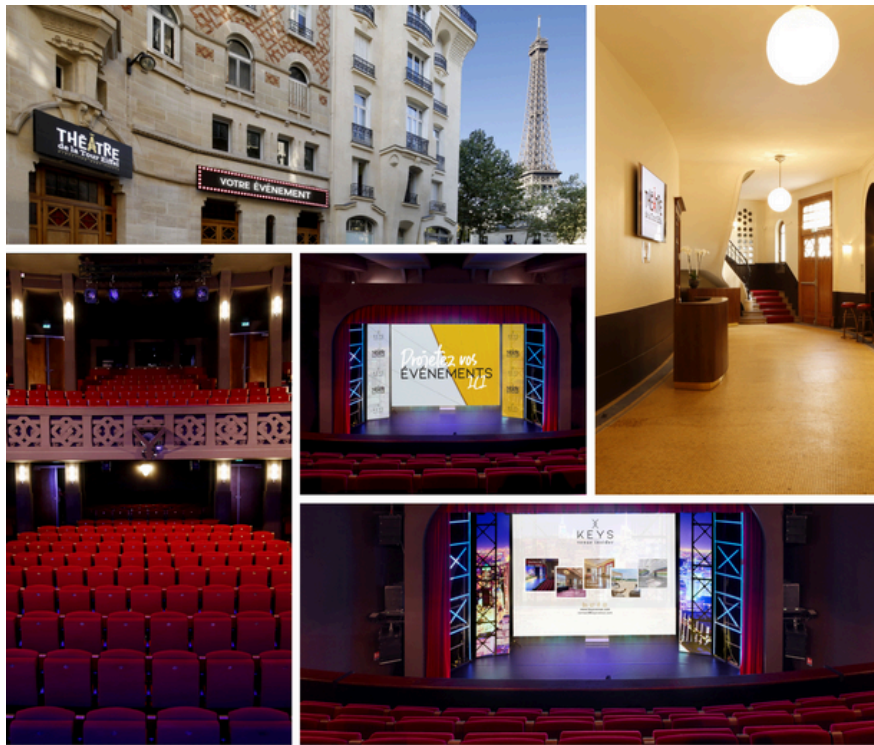
Showroom for up to 50 people



5 comfortable rooms



Hotel service on request




THE EIFFEL TOWER THEATER

DISCOVER 

 SQUARE RAPP, PARIS 7E

The Théâtre de la Tour Eiffel, merging Art Nouveau and Art Deco, is a renowned performance hall. Ideal for corporate events, conferences, awards ceremonies, conferences, seminars or product launches. With its 40 square meter LED wall, it offers exceptional flexibility for all types of events.

 250 people


 498 people

THE COMEDY OF THE CHAMPS-ÉLYSÉES

DISCOVER 

 AVENUE MONTAIGNE, PARIS 8E

The Comédie des Champs-Élysées offers you ideal architecture for large-scale institutional events. This building embodies the modernity of its time and brings together the decorative art of the famous artists Lalique, Vuillard, Bourdelle and Roussel.

 300 people

 600 people



APARTMENT 8



 **TRIANGLE D'OR, PARIS 8E**

Located on the 5th floor of an Art Deco building, this reception apartment near the Grand Palais offers a bright, crossing space.

Among its advantages, this 270m² space is entirely modular. It includes a living room ideal for cocktails and conferences, several rooms suitable for meetings, a library and an equipped kitchen. From the tree-lined balcony, you can enjoy a breathtaking view of the Grand Palais and the Eiffel Tower.



Cocktail party for up to 60 people



Lunch / Dinner for up to 30 people



Showroom / Pop Up 40 personnes



Meeting / Conference for up to 20 people

DISCOVER 

THE VOSGES APARTMENT



PLACE DES VOSGES, PARIS 3RD

This remarkable contemporary creation by Knoll offers a breathtaking view of the gardens of Place des Vosges. A bright and refined sideboard, available for privatization, which combines modern and statutory elegance.

This modular 150m² space is ideal for unique events. It includes a living room for cocktails and conferences, an office workspace for meetings, a library, and an equipped kitchen.



Cocktail party for up to 60 people



Lunch / Dinner for up to 30 people



Meeting of up to 20 people



Showroom de 150m²



Hotel service on request

DISCOVER 

THE KEYS VILLA

 CANNES



Located on the outskirts of the Super Cannes residential district, this 11-hectare estate offers incomparable serenity above the Mediterranean, with a panoramic view, while being close to the Croisette and the Palais des Festivals.

Villa Keys has a large living room and dining room, an equipped kitchen with pantry, a screening room, gym, a park, a swimming pool with pool house and three terraces.



Cocktail party for up to 200 people



Lunch / Dinner for up to 70 people



Seminar from 5 people



6 bedrooms with their bathroom



Hotel service on request

DISCOVER 

CHÂTEAU SAINT-LÉGER

 SAINT-GERMAIN-EN-LAYE

Just 30 minutes from Paris, Château Saint-Léger in Saint-Germain-en-Laye is at the heart of a campus dedicated to innovative companies.

Its Belle Époque neo-Gothic architecture blends perfectly with its facilities.

This place is ideal for hosting ambitious professional events, offering a large modular glass roof of 1200 m², a 270-seat auditorium, a small 40-seat auditorium, 3 connected lounges, the Orangerie and its terrace for cocktails, as well as the Le Tremplin sports complex.



DISCOVER



Cocktail for up to 310 people



Lunch / Dinner for up to 350 people



Meeting of up to 19 people



Conference for up to 270 people



7 comfortable rooms



Hotel service on request



 *SAINT-MARTIN-DES-CHAMPS*

Corbeville College is nestled in a green park on the outskirts of Yvelines.

This establishment combines tradition and modernity, offering a romantic rural setting while being easily accessible from the west of Paris.

The establishment includes a meeting room, a large lounge, a small lounge, a library, as well as a College room on the 1st floor. It also has a kitchen workshop, a wine cellar, and a 3-hectare park with a swimming pool and a pool house.



Cocktail party for up to 150 people



Lunch / Dinner for up to 50 people



Meeting of up to 19 people



4 comfortable bedrooms




Hotel service on request

DISCOVER 



GALERIE VOSGES

 *MARAIS, PARIS 3RD*

Located in the heart of the legendary Marais district, our gallery is at the bottom of a flower-filled courtyard with a view of the Place des Vosges. It is the ideal place to display your collections and welcome your guests in an intimate atmosphere.



Cocktail party for up to 60 people



Lunch / Dinner for up to 50 people



Showroom / Pop Up : 40 personnes

POP-UP TURENNE

 *RUE DE TURENNE, PARIS 3RD*

Located in the Marais district, the Pop-up Turenne offers exceptional visibility thanks to its large window. Its atypical spaces and solid wood flooring create a warm atmosphere, perfect for showcasing your new collections.



Cocktail party for up to 60 people



Lunch / Dinner for up to 50 people



Showroom / Pop Up : 40 personnes





OUR PROMISE

THE SESAME

Explore rare and unique locations that transform every event.

SOURCING

We select professional partners (gastronomy, A/V technique, animation) who cultivate the unexpected while eliminating the unexpected.

SUPPORT

Enjoy ongoing support before, during and after your event from our dedicated expert advisors.

THE TAILOR-MADE

We offer a variety of unique event formats and configurations that we tailor to your specific needs.

THE EVENT AUDIT

We provide post-event monitoring and performance reporting to assess the impact of your event.

LA PERSPECTIVE BUSINESS

In strategic collaboration, we build long-term global event collaboration contracts, adapted to different formats and locations.

YOUR CONTACT :

GREGORY HECTOR
Commercial Development/Event

+33 (0)6 14 26 40 14

gregory.h@keysvenue.com

Find us on :

